

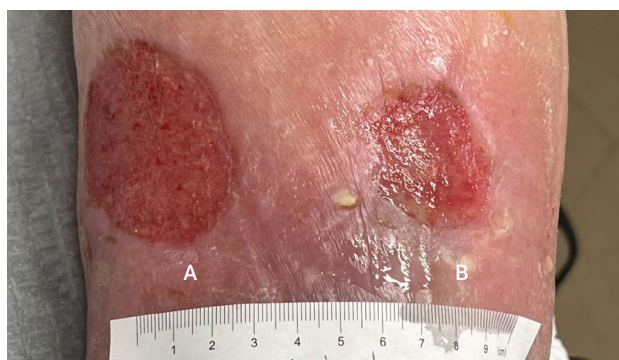
Case Study

Impax™ Dual Layer Membrane

Case presented by Jacob Fassman, DPM; Podiatrist;
Colorado Foot and Ankle; Colorado Springs, CO

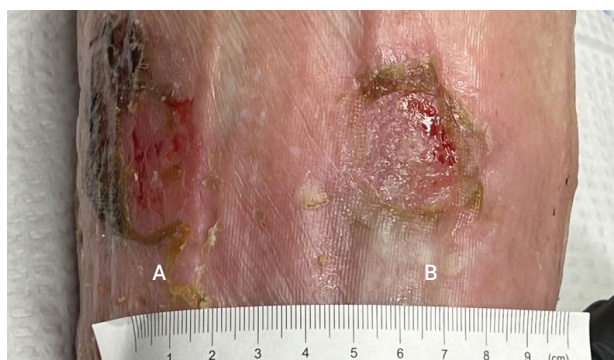
A 74 YEAR OLD MALE with a history of diabetes, GERD, COPD, hypertension, atrial fibrillation, and hypercholesterolemia presented for an urgent visit due to left lower extremity ulcerations. The patient has a history of venous insufficiency and venous ulcerations.

Location: **Left leg**
Wound type: **Venous ulcer**
Weeks to resolution: **4**
Total number of Impax applications: **3**



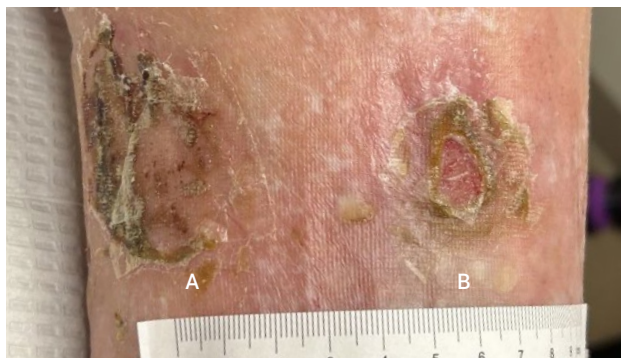
Sizes: (A) **6 x 4.5 x 0.1 cm** | (B) **2.5 x 3 x 0.1 cm**

INITIAL VISIT Incision, draining, and debridement, with Impax to be applied at next follow-up



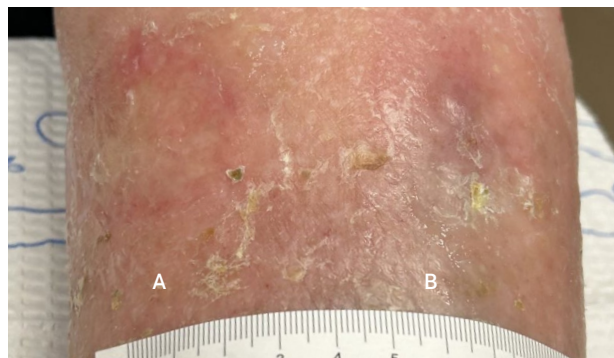
Sizes: (A) **6 x 4.5 x 0.1 cm** | (B) **2.5 x 3 x 0.1 cm**

WEEK 1 After sharp excisional debridement, application of 4 x 8 cm Impax



Sizes: (A) **3 x 1.8 x 0.1 cm** | Volume reduced: **80%**
(B) **2.5 x 2 x 0.1 cm** | Volume reduced: **33.3%**

WEEK 2 Patient tolerating Impax well; a second 4 x 8 cm Impax is applied



Sizes: (A) **Wound resolved**
(B) **1.5 x 1 x 0.1 cm** | Volume reduced: **70%**

WEEK 3 Patient is improving; a third 4 x 4 cm Impax is applied, after which wounds are completely healed at fourth week follow-up